

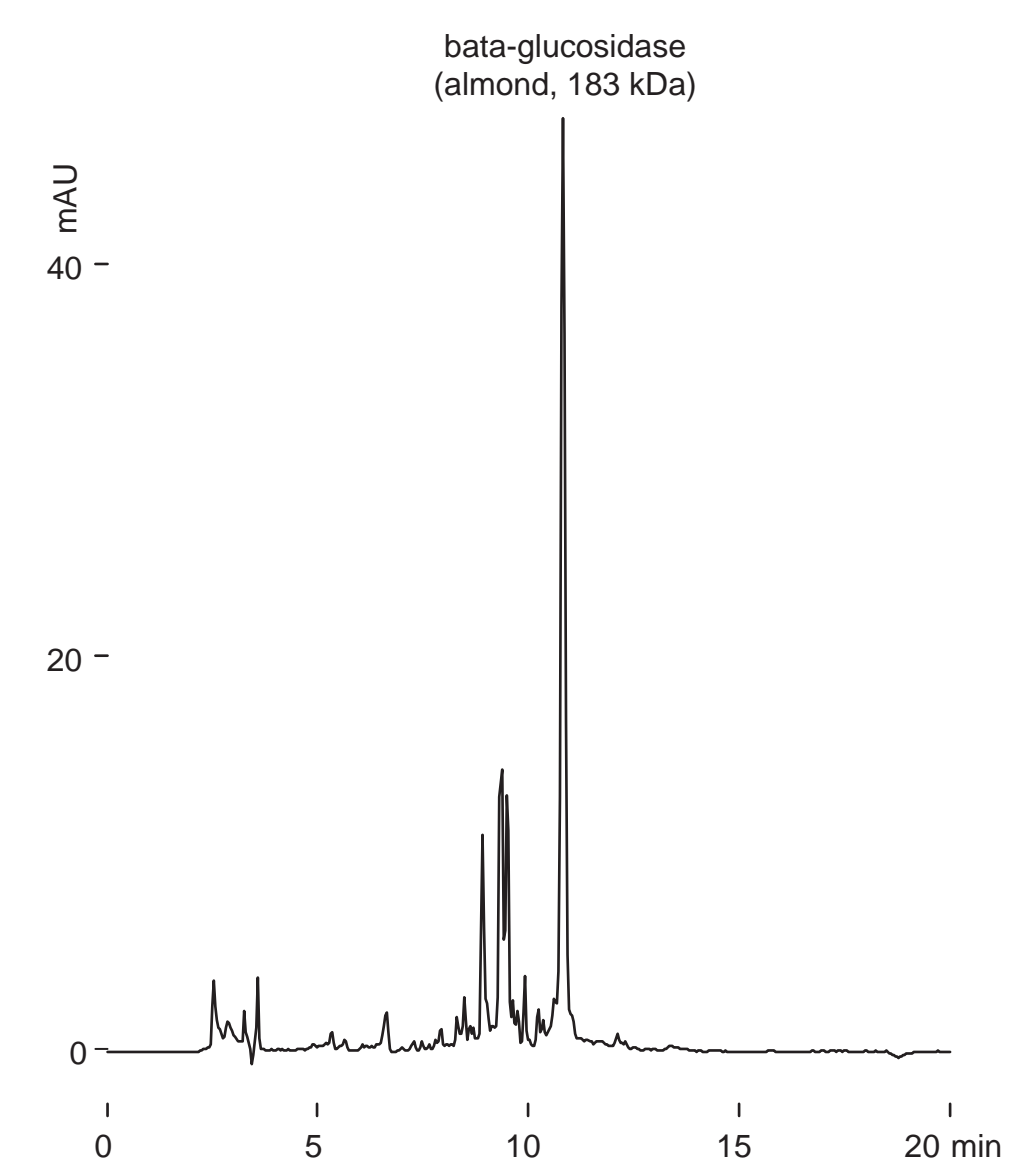
**Intrada WP-RP**

250 x 4.6 mm

Application

**Protein, beta-Glucosidase**

タンパク質,  $\beta$ -グルコシダーゼ



Intrada WP- RP, 250 x 4.6 mm  
A: water /TFA = 100 /0.1  
B: acetonitrile /TFA = 100 /0.07  
30-50%B (0-15min)  
1.0 mL/min (16 MPa)  
37 deg.C, 280 nm, 8 uL (42.4 ug)