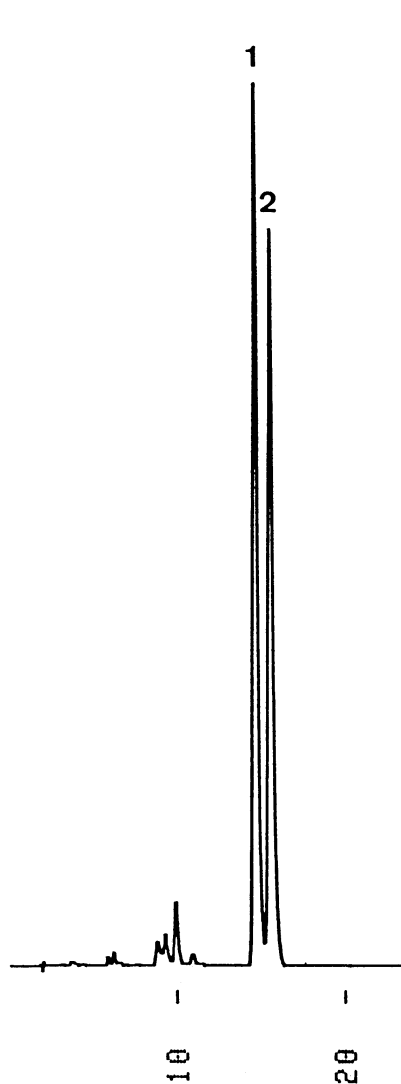


カロテン
Carotene

G910523Q



1. α -Carotene
2. β -Carotene

Column : YMC-Pack ODS-A (5 μ m, 12nm)
150 \times 4.6 mm I.D.
Eluent : acetonitrile/methanol/THF (50/45/5)
Flow rate : 1.0 mL/min
Temperature : 30 $^{\circ}$ C
Detection : VIS at 450 nm, 0.16 AUFS
Injection : 5 μ L (0.05 mg/mL)