

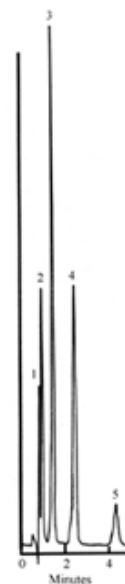
# Chlorophenols on 150 x 4.1 mm PRP-1, P/N 79425

## Application #12

### Chromatographic Conditions:

<b>Packing Material:</b>	PRP-1
<b>Column:</b>	150 x 4.1 mm
<b>Eluent A:</b>	Trisodium Phosphate
<b>Eluent A pH:</b>	12
<b>Eluent A Concentration:</b>	0.1 N
<b>Eluent B:</b>	Acetonitrile
<b>Mobile Phase Composition:</b>	2.5:1
<b>Gradient:</b>	Isocratic
<b>Flow Rate:</b>	2.0 mL/min
<b>Temperature:</b>	Ambient
<b>Injection Volume:</b>	10 µL
<b>Detection:</b>	UV at 254 nm

Appl. #12 Chlorophenols



Peak ID:	Compound:	Peak ID:	Compound:
1	p-Chlorophenol	4	2,3 4,6-Tetrachlorophenol
2	2,4-Dichlorophenol	5	Pentachlorophenol
3	2,4,6-Trichlorophenol		