

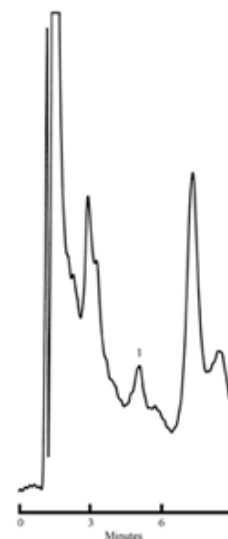
2,4-D in Soil Extract on 150 x 4.1 mm PRP-1 (P/N 79425)

Application #163

Appl. #163 2,4-D in Soil Extract

Chromatographic Conditions:

Packing Material:	PRP-1
Column:	150 x 4.1 mm
Eluent A:	Acetonitrile
Eluent B:	0.1% TFA
Eluent B pH:	2
Mobile Phase Composition:	4.5:5.5
Gradient:	Isocratic
Flow Rate:	1.0 mL/min
Temperature:	Ambient
Injection Volume:	10 µL
Detection:	UV at 215 nm
Sample Prep:	10 g of soil extracted with acetonitrile and



Peak ID:	Compound:
1	2,4-Dichlorophenoxyacetic Acid (2,4-D)

Peak ID: Compound: