

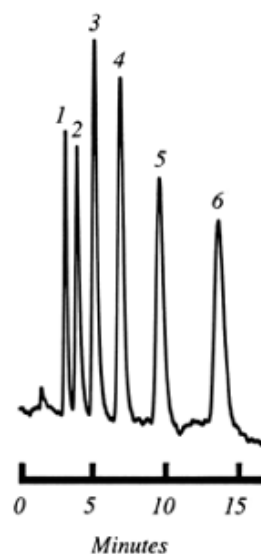
C6 to C11 Alcohols on 250 x 4.1 mm PRP-1, P/N 79427

Application #21

Chromatographic Conditions:

Packing Material:	PRP-1
Column:	250 x 4.1 mm
Eluent A:	Sodium phosphate
Eluent A pH:	4.5
Eluent A Concentration:	10 mM
Eluent B:	Acetonitrile
Mobile Phase Composition:	2:3
Gradient:	Isocratic
Flow Rate:	1.2 mL/min
Temperature:	20° C
Injection Volume:	10 µL (of a 10 mg sample)
Detection:	Refractive Index
Sample Matrix:	air

Appl. #21 C6 to C11 Alcohols



Peak ID:	Compound:
1	1-Hexanol
2	1-Heptanol
3	1-Octanol

Peak ID:	Compound:
4	1-Nonanol
5	1-Decanol
6	1-Undecanol