

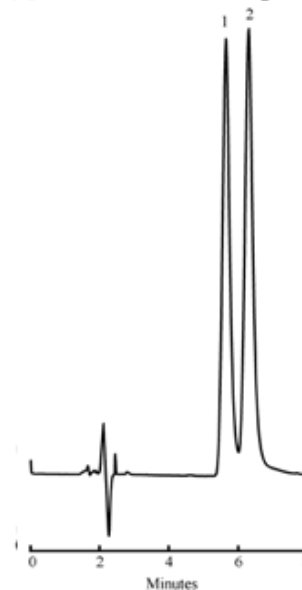
# Dinitrophenols on 150 x 4.1 mm PRP-1 (P/N 79425)

## Application #216

### Chromatographic Conditions:

<b>Packing Material:</b>	<a href="#">PRP-1</a>
<b>Column:</b>	150 x 4.1 mm
<b>Eluent A:</b>	10 mM Sodium Acetate with Hydrochloric Acid
<b>Eluent A pH:</b>	4.0
<b>Eluent B:</b>	Acetonitrile
<b>Mobile Phase Composition:</b>	65:35:00
<b>Gradient:</b>	Isocratic
<b>Flow Rate:</b>	1.0 mL/min
<b>Temperature:</b>	Ambient
<b>Injection Volume:</b>	10 µL
<b>Detection:</b>	UV at 254 nm

## Appl. #216 Dinitrophenol



Peak ID:	Compound:
1	2,6-Dinitrophenol

Peak ID:	Compound:
2	2,4-Dinitrophenol