

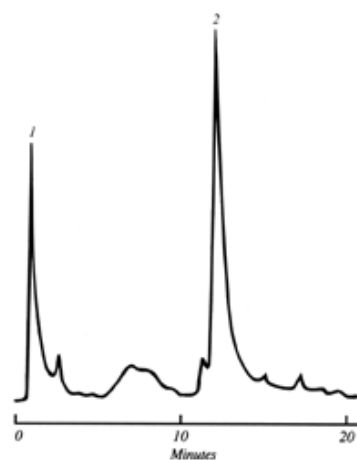
# 5'DMT 36mer on 150 x 4.1 mm PRP-1, P/N 79425

## Application #26

## Appl. #26 5' DMT 36mer

### Chromatographic Conditions:

<b>Packing Material:</b>	<a href="#">PRP-1</a>
<b>Column:</b>	150 x 4.1 mm
<b>Eluent A:</b>	Sodium Hydroxide
<b>Eluent A pH:</b>	12.7
<b>Eluent A Concentration:</b>	50 mM
<b>Eluent B:</b>	1:1 Sodium Hydroxide : Acetonitrile
<b>Eluent B pH:</b>	12.7
<b>Eluent B Concentration:</b>	50 mM
<b>Gradient:</b>	0-50% B (2-25 minutes)
<b>Flow Rate:</b>	1.5 mL/min
<b>Temperature:</b>	60° C
<b>Detection:</b>	UV at 260 nm



Peak ID:	Compound:	Peak ID:	Compound:
1	Failure Sequences	2	DNA
2	5'DMT 36mer 50 O.D.		