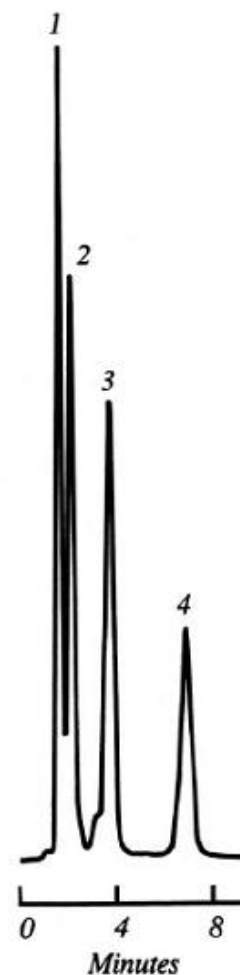


# Chlorophenols on 150 x 4.1 mm PRP-1, P/N 79425

## Application #37

### Chromatographic Conditions:

Packing Material:	PRP-1
Column:	150 x 4.1 mm
Eluent A:	Trisodium Phosphate
Eluent A pH:	12.0
Eluent A Concentration:	100 mN
Eluent B:	Acetonitrile
Mobile Phase Composition:	3:1
Gradient:	Isocratic
Flow Rate:	2.0 mL/min
Temperature:	Ambient
Injection Volume:	10 µL
Detection:	UV at 254 nm



Peak ID:	Compound:	Peak ID:	Compound:
1	p-Chlorophenol	3	2,4,6 Trichlorophenol
2	2,4-Dichlorophenol	4	2,3,5,6-Tetrachlorophenol